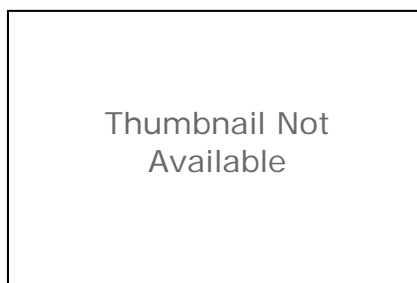


1415yr_MS4_Wet_Drainage_Area_SMR

Shapefile



Tags

drainage area, stormwater, wet weather, MS4 outfall

Summary

A map layer showing the drainage areas of the wet weather MS4 outfall monitoring locations in the Santa Margarita River Watershed Management Area (WMA) during the 2014-2015 transitional monitoring year.

Description

During the transitional period of the 2013 MS4 Permit, transitional wet weather MS4 outfall discharge monitoring was conducted in accordance with Provision D.2.a.(3) of the Permit. The County of San Diego was required to monitor two outfalls in the Santa Margarita River WMA, and monitoring locations were chosen to be representative of the Residential, Commercial, Industrial, and typical Mixed-use land uses within the WMA. The polygons in this shapefile are the approximate drainage areas of the MS4 outfalls that were monitored during one storm event each during the 2014-2015 monitoring year.

Credits

County of San Diego.
Weston Solutions, Inc.

Use limitations

There are no access and use limitations for this item.

Extent

West	-117.258924	East	-117.224285
North	33.395007	South	33.373418

Scale Range

Maximum (zoomed in)	1:5,000
Minimum (zoomed out)	1:150,000,000

You are currently using the Item Description metadata style. Change your metadata style in the Options dialog box to see additional metadata content.